

- Plant-4.5 MT Coal Washery
- Application Area-1200mm B/W conveyor Coal Handling Plant

CS/20-21/005

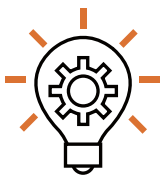
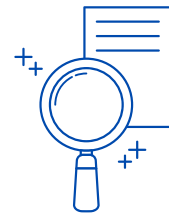


## Problem

- Excessive deposition of carryback spillage under the belt
- Daily engagement of labor for cleaning of spilled material
- Premature failure of the idlers

## Identification of problem

The scrapers installed in the conveyor were ineffective resulting into higher spillage

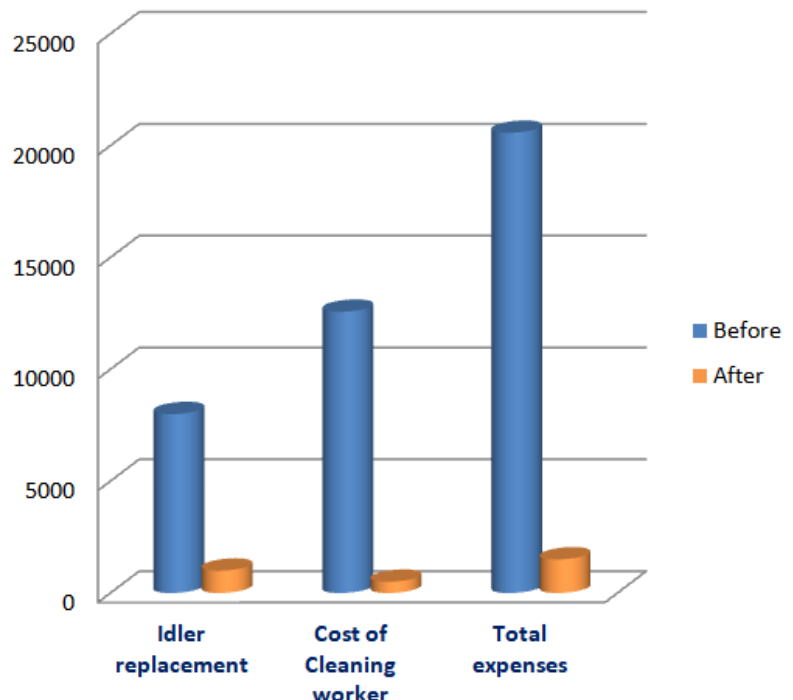


## Solution Implemented

The primary scraper with PU blade was replaced with a metallic blade head pulley scraper. The metallic blade secondary scraper remained unchanged.

## Results and Benefits

- Cleaning efficiency improved by 17%.
- Daily engagement of labour reduced to once in a month.
- Average life of return idlers improved. Consumption of idlers reduced by 3 idlers per month



Other unaccounted costs include cost of Unrecovered material, servicing cost etc.